

Contents

<i>Preface</i>	3
<i>Metrical Index of Tunes</i>	95
Tune (Piano, Guitar, Handbells)	Page
Ar hyd y nos	4-7
Azmon	8-10
Beach Spring	11-13
Break Bread Together	14-17
Detroit	18-20
Dove of Peace	21-23
Duke Street	24-27
Give Me Jesus	28-31
Hankey	32-35
Holy Manna	36-39
Hyfrydol	40-43
Kingsfold	44-47
Land of Rest	48-50
Lauda anima	76-78
Leoni	88-91
Let Us Break Bread	14-17
Liebster Jesu, wir sind hier	51-53
Lord, Revive Us	54-57
Merton	62-64
Nicaea	58-61
O Waly Waly	65-67
Picardy	68-71
Praise, My Soul	76-78
Slane	72-75
St. Columba	79-81
St. Denio	92-94
St. Thomas (<i>in E-flat</i>)	82-84
St. Thomas (<i>in F</i>)	85-87
Yigdal	88-91

Preface

Introduction

Sing It Simply is a collection of twenty-five familiar hymntunes arranged for piano with optional guitar, handbells, and bass. The settings are intended for unison singing, and many are in a lower key than is found in most standard hymnals. Some are complete reharmonizations while others are closely parallel standard harmonizations. The idea for this collection came from a presentation at a Hymn Society Conference on arranging hymntunes for folk-style piano and guitar.

Descants

Optional descants are provided for each tune. Intended for handbells, most utilize bells found within a two-octave set, and some may be played as bell tree arrangements. They may also be played on a C instrument, or in a few cases, might be sung by a small group on a syllable designated by the director. Consider using the descants sparingly, perhaps only on the introduction and final stanza.

Guitar, Bass, and Other Instruments

A separate guitar/bass part is provided with chords and melody. A bass player can play a bass line from the piano part or guitar lead sheet. Consider adding percussion instruments such as shakers, congas, or others. One might layer the parts, starting with piano and adding or subtracting the descant or other instruments on succeeding verses.

If the guitar player is able to do so, encourage him or her to improvise a free standing hymn stanza or a prelude or offertory based on the lead sheet. Include the bass player if possible.

I hope you will find these settings useful in your music ministry.

Thomas Keesecker

Metrical Index of Tunes

SM

(Short Meter—66 86)

St. Thomas

CM

(Common Meter— 86 86)

Azmon

Detroit

Land of Rest

CMD

(Common Meter Double—86 86 86 86)

Kingsfold

LM

(Long Meter— 88 88)

Duke Street

O Waly Waly

66 84 D

Leoni

Yigdal

76 76 D with refrain

Hankey

78 78 88

Liebster jesu, wir sind hier

84 84 88 44

Ar hyd y nos

86 866

Dove of Peace

87 87

Merton

St. Columba

87 87 D

Beach Spring

Holy Manna

Hyfrydol

Lord, Revive Us

87 87 87

Lauda Anima

Picardy

Praise, My Soul

10 10 with refrain

Break Bread Together

Let Us Break Bread

10 10 10 10 or 10 11 11 12

Slane

11 11 11 11

St. Denio

11 12 12 10

Nicaea

Irregular

Give Me Jesus

Nicaea

Copying is illegal
Review only

Ar hyd y nos

Piano with opt. Guitar, Handbells or C Instrument, and Bass

2 Octaves
Handbells Used: 8



Thomas Keesecker

Handbells

Piano

Chords: F, Bb, Gm, C, Bb, C

The piano accompaniment consists of two staves. The right hand plays chords and moving lines, while the left hand plays a steady eighth-note bass line. The chords are F, Bb, Gm, C, Bb, and C.

4

Chords: F, F, Bb, Gm, C

This section shows the continuation of the piano accompaniment, starting with a measure rest in the right hand for the first measure. The chords are F, F, Bb, Gm, and C.

Tune: *AR HYD Y NOS*, Traditional Welsh (PD).
Music: Newly composed, and copyright © 2012 with this publication.

Copyright © 2012 Birnamwood Publications (ASCAP)
A division of MorningStar Music Publishers, Inc., St. Louis, MO
All rights reserved. Printed in U.S.A. 1.800.647.2117 www.MorningStarMusic.com
Reproducing this publication in any form is prohibited by law without the permission of the publisher.
The CCLI License does not give permission to copy this music.

Guitar/Bass

Ar hyd y nos

Piano with opt. Guitar, Handbells or C Instrument, and Bass

Thomas Keesecker

Capo 3

Guitar/Bass: D G Em A G A D
 F $B\flat$ Gm C $B\flat$ C F

5

D G Em A G A D
 F $B\flat$ Gm C $B\flat$ C F

Handbells/C Instrument

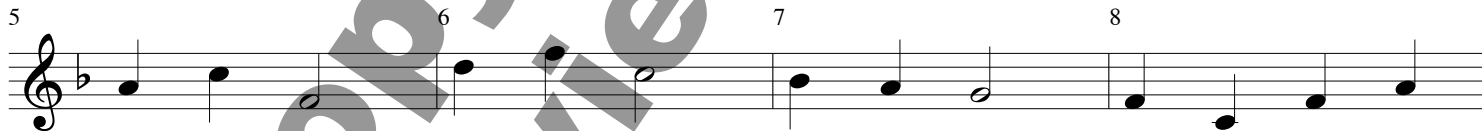
Ar hyd y nos

Piano with opt. Guitar, Handbells or C Instrument, and Bass

2 Octaves
Handbells Used: 8



Thomas Keesecker



Hyfrydol

Piano with opt. Guitar, Handbells or C Instrument, and Bass

2 Octaves
Handbells Used: 7



Thomas Keesacker

Handbells

Piano

D D/F# Em A7 D/F#

6

GM7 A7 D D D/F#

11

Em A7 D/F# GM7 A7

Tune: *HYFRYDOL*, Rowland H. Prichard, 1811-1887, and written in 1831 (PD).
Music: Newly composed, and copyright © 2012 with this publication.

Copyright © 2012 Birnamwood Publications (ASCAP)
A division of MorningStar Music Publishers, Inc., St. Louis, MO
All rights reserved. Printed in U.S.A. 1.800.647.2117 www.MorningStarMusic.com
Reproducing this publication in any form is prohibited by law without the permission of the publisher.
The CCLI License does not give permission to copy this music.

Guitar/Bass

Hyfydol

Piano with opt. Guitar, Handbells or C Instrument, and Bass

Thomas Keesecker

Guitar/Bass:

D D/F# Em A7 D/F#



6 GM7 A7 D D D/F# Em



12 A7 D/F# GM7 A7 D F#m



Handbells/C Instrument

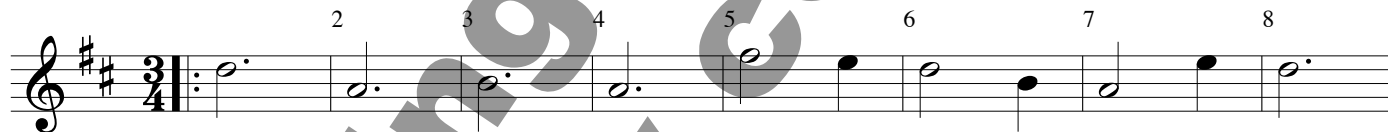
Hyfrydol

Piano with opt. Guitar, Handbells or C Instrument, and Bass

2 Octaves
Handbells Used: 7



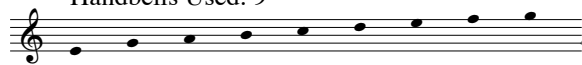
Thomas Keesecker



Nicaea

Piano with opt. Guitar, Handbells or C Instrument, and Bass

2 Octaves
Handbells Used: 9



Thomas Keesecker

Handbells

Piano

C Am7 G C /E F C

5

G Am7 G/B C G/D D7 G7

Tune: *NICAEA*, John B. Dykes, 1823-1876, and written in 1861 (PD).
Music: Newly composed, and copyright © 2012 with this publication.

Copyright © 2012 Birnamwood Publications (ASCAP)
A division of MorningStar Music Publishers, Inc., St. Louis, MO
All rights reserved. Printed in U.S.A. 1.800.647.2117 www.MorningStarMusic.com
Reproducing this publication in any form is prohibited by law without the permission of the publisher.
The CCLI License does not give permission to copy this music.

Guitar/Bass

Nicaea

Piano with opt. Guitar, Handbells or C Instrument, and Bass

Thomas Keesecker

Guitar/Bass: C

Am7

G

C

E

F

C



5

G

Am7

G/B

C

G/D

D7

G7



Handbells/C Instrument

Nicaea

Piano with opt. Guitar, Handbells or C Instrument, and Bass

2 Octaves
Handbells Used: 9



Thomas Keesecker

