

Level
2+

Cello (or Digital Strings) Part — 2592P

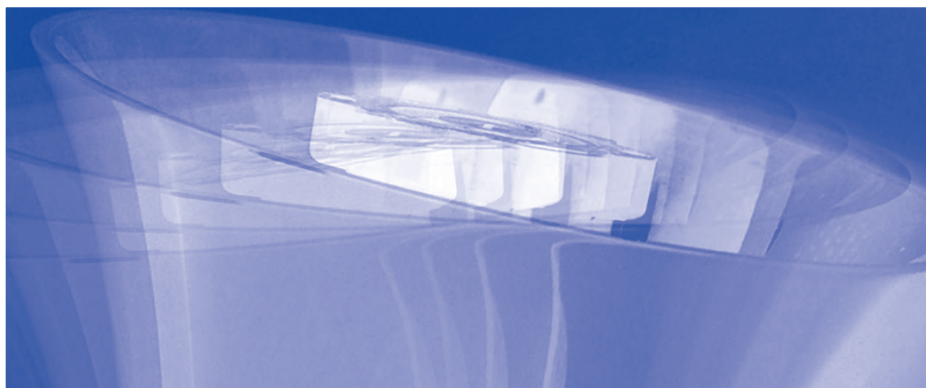
THE JOEL RANEY
HANDBELL SERIES

you raise me up

Brendan Graham
& Rolf Lovland

Arranged for 3-5 octave handbells
with optional 3-5 octave handchimes
and cello (or digital strings) by

Joel Raney



AGAPE A Division of
HopePublishing Company
Since 1892 Carol Stream, IL 60188

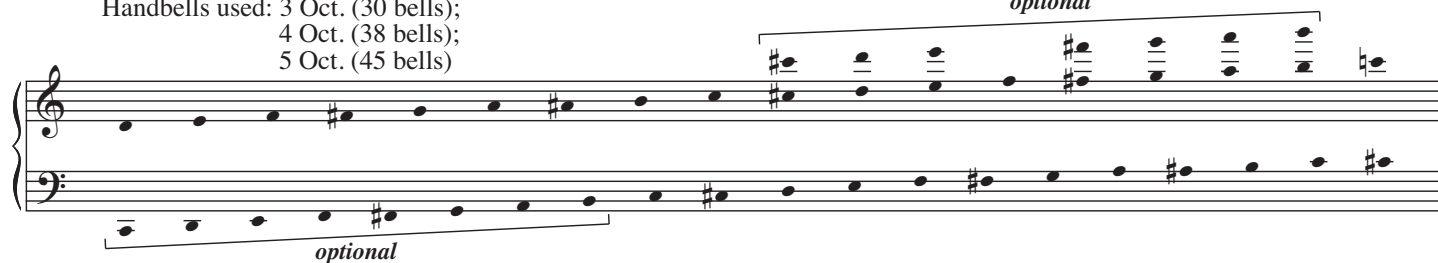
www.hopepublishing.com
800-323-1049

You Raise Me Up

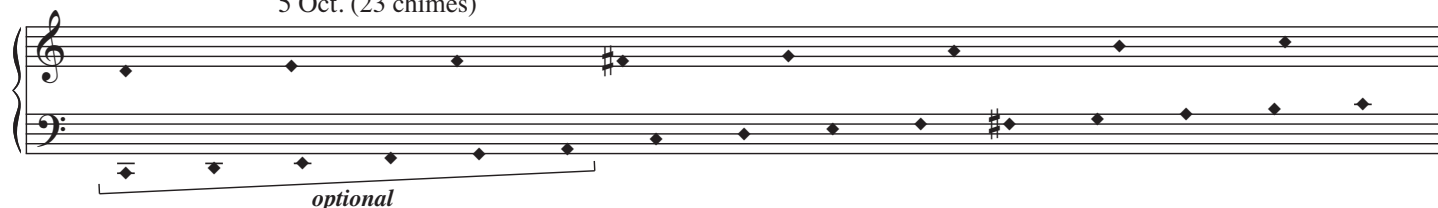
For 3-5 Oct. Handbells with optional 3-5 Oct. Handchimes
and Cello (or Digital Strings)*

Handbells used: 3 Oct. (30 bells);
4 Oct. (38 bells);
5 Oct. (45 bells)

optional



Handchimes used: 3 Oct. (17 chimes);
4 Oct. (19 chimes);
5 Oct. (23 chimes)



Arranged by
JOEL RANEY

3 & 4 Octave choirs omit notes in ()

Music by
BRENDAN GRAHAM
and ROLF LOVLAND

1 **Moderately** (♩ = 92)

2 3 4

mp LV

5 6 7 8

LV

mf

Piano accompaniment musical notation for measures 1-8. The notation is on a grand staff. Measures 1-8 show a sequence of notes and rests, with dynamics markings (mp, LV, mf) and measure numbers (1-8) indicated.

*Cello (or Digital Strings) part available: Code no. 2592P

© 2002 and this Arr. © 2012 by Peermusic (UK) Ltd. and Universal Music Publishing, a division of Universal Music AS.

All rights for Peermusic (UK) Ltd. in the United States controlled and administered by Peermusic III, Ltd.

All rights for Universal Music Publishing, a division of Universal Music AS in the United States and Canada
controlled and administered by Universal-PolyGram International Publishing, Inc.

International copyright secured. All rights reserved.

Reprinted by permission of Hal Leonard Corporation

The copying of this music is prohibited by law and is not covered by CCLI, LicenSing, or OneLicense.net.

Sole Selling Agent of this 2012 arrangement: Agape (a Division of Hope Publishing Company, Carol Stream, IL 60188)

www.hopepublishing.com 800-323-1049

Measures 9-12 of the musical score. Measure 9 features a treble clef with a melodic line starting on G4, marked with a hairpin crescendo and the instruction 'LV'. The bass clef has a sustained chord of G2-B2-D3. Measure 10 continues the treble line, ending with a half note G4, while the bass clef has a half note G2. Measure 11 is marked with a hairpin decrescendo and the instruction 'mp'. The treble clef has a melodic line starting on G4, and the bass clef has a half note G2. Measure 12 continues the treble line, ending with a half note G4, while the bass clef has a half note G2. The instruction 'LV' is also present in measure 12.

Measures 13-16 of the musical score. Measure 13 features a treble clef with a melodic line starting on G4, marked with 'LV'. The bass clef has a half note G2. Measure 14 continues the treble line, ending with a half note G4, while the bass clef has a half note G2. Measure 15 is marked with a hairpin decrescendo and the instruction 'LV'. The treble clef has a melodic line starting on G4, and the bass clef has a half note G2. Measure 16 continues the treble line, ending with a half note G4, while the bass clef has a half note G2. The instruction 'LV' is also present in measure 16.

Measures 17-20 of the musical score. Measure 17 features a treble clef with a melodic line starting on G4, marked with 'LV'. The bass clef has a half note G2. Measure 18 continues the treble line, ending with a half note G4, while the bass clef has a half note G2. Measure 19 is marked with a hairpin decrescendo and the instruction 'LV'. The treble clef has a melodic line starting on G4, and the bass clef has a half note G2. Measure 20 is marked with 'R' and features a treble clef with a melodic line starting on G4, while the bass clef has a half note G2.

Measures 21-24 of the musical score. Measure 21 features a treble clef with a melodic line starting on G4, marked with 'R'. The bass clef has a half note G2. Measure 22 continues the treble line, ending with a half note G4, while the bass clef has a half note G2. Measure 23 is marked with a hairpin decrescendo and the instruction 'LV'. The treble clef has a melodic line starting on G4, and the bass clef has a half note G2. Measure 24 continues the treble line, ending with a half note G4, while the bass clef has a half note G2. The instruction 'LV' is also present in measure 24.