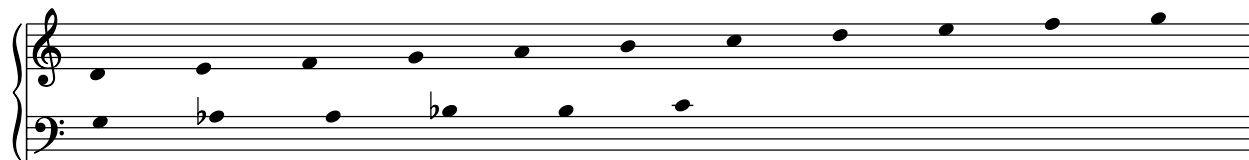


There Is a Balm in Gilead

Handbells or Handchimes used: 2 octaves (17 bells)

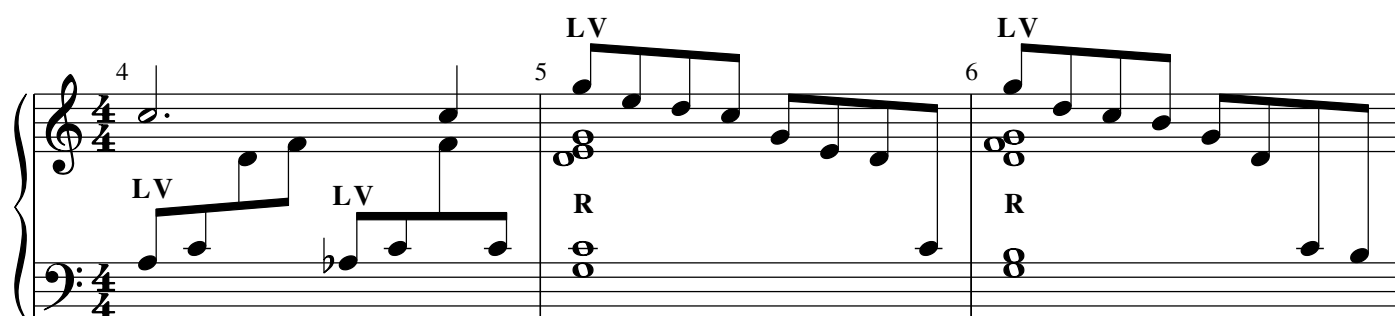
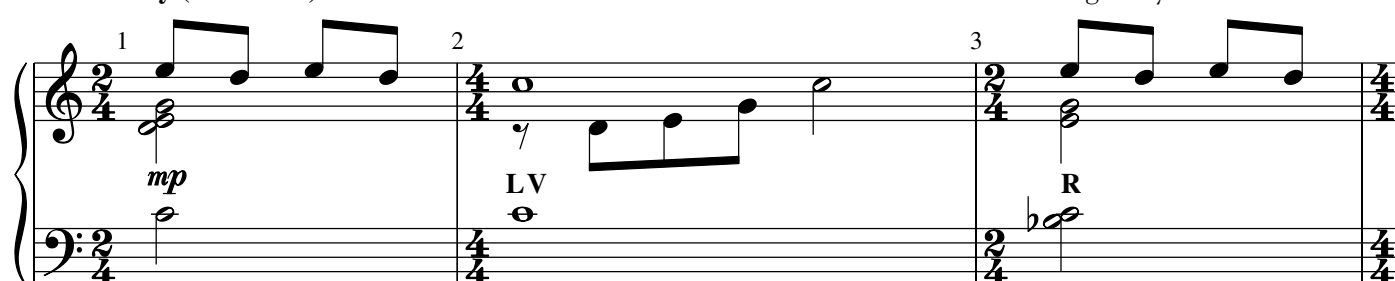


BALM IN GILEAD

American Folk Hymn

Arranged by Susan E. Geschke

Freely (♩ = ca. 72)



Expressively (♩ = ca. 74-80)



© 2010 Agape (a Division of Hope Publishing Company) Carol Stream, Illinois 60188.

www.hopepublishing.com 800.323.1049

All Rights Reserved. International Copyright Secured.

The copying of this music is prohibited by law and is not covered by CCLI, LicenSing, or OneLicense.net.

Measures 10-12 of the musical score. The piece is in 2/4 time. Measure 10 features a treble staff with a quarter rest, a quarter note G4, and a half note F#4, and a bass staff with a half note G3. Measure 11 features a treble staff with a quarter rest, a quarter note G4, and a half note F#4, and a bass staff with a half note G3. Measure 12 features a treble staff with a quarter rest, a quarter note G4, and a half note F#4, and a bass staff with a half note G3. The piece concludes with a double bar line and a 2/4 time signature.

Measures 13-15 of the musical score. The piece is in 2/4 time. Measure 13 features a treble staff with a quarter note G4, a quarter note F#4, and a half note E4, and a bass staff with a half note G3. Measure 14 features a treble staff with a quarter note G4, a quarter note F#4, and a half note E4, and a bass staff with a half note G3. Measure 15 features a treble staff with a quarter note G4, a quarter note F#4, and a half note E4, and a bass staff with a half note G3. The piece concludes with a double bar line and a 2/4 time signature.

Measures 16-18 of the musical score. The piece is in 2/4 time. Measure 16 features a treble staff with a quarter note G4, a quarter note F#4, and a half note E4, and a bass staff with a half note G3. Measure 17 features a treble staff with a quarter note G4, a quarter note F#4, and a half note E4, and a bass staff with a half note G3. Measure 18 features a treble staff with a quarter note G4, a quarter note F#4, and a half note E4, and a bass staff with a half note G3. The piece concludes with a double bar line and a 2/4 time signature.

Measures 19-21 of the musical score. The piece is in 2/4 time. Measure 19 features a treble staff with a quarter note G4, a quarter note F#4, and a half note E4, and a bass staff with a half note G3. Measure 20 features a treble staff with a quarter note G4, a quarter note F#4, and a half note E4, and a bass staff with a half note G3. Measure 21 features a treble staff with a quarter note G4, a quarter note F#4, and a half note E4, and a bass staff with a half note G3. The piece concludes with a double bar line and a 2/4 time signature.

Measures 22-24 of the musical score. The treble clef staff contains chords and single notes, while the bass clef staff contains whole notes and eighth notes. Measure 22 has a treble staff with a colon and a bass staff with a whole note and the label 'LV'. Measure 23 has a treble staff with a colon and a bass staff with a whole note and the label 'LV'. Measure 24 has a treble staff with a colon and a bass staff with a whole note and the label 'LV'.

Measures 25-28 of the musical score. The treble clef staff contains chords and single notes, while the bass clef staff contains whole notes and eighth notes. Measure 25 has a treble staff with a colon and a bass staff with a whole note and the label 'R'. Measure 26 has a treble staff with a colon and a bass staff with a whole note and the label 'mf'. Measure 27 has a treble staff with a colon and a bass staff with a whole note and the label 'mf'. Measure 28 has a treble staff with a colon and a bass staff with a whole note and the label 'mf'.

Measures 29-31 of the musical score. The treble clef staff contains chords and single notes, while the bass clef staff contains whole notes and eighth notes. Measure 29 has a treble staff with a colon and a bass staff with a whole note. Measure 30 has a treble staff with a colon and a bass staff with a whole note. Measure 31 has a treble staff with a colon and a bass staff with a whole note.

Measures 32-34 of the musical score. The treble clef staff contains chords and single notes, while the bass clef staff contains whole notes and eighth notes. Measure 32 has a treble staff with a colon and a bass staff with a whole note. Measure 33 has a treble staff with a colon and a bass staff with a whole note. Measure 34 has a treble staff with a colon and a bass staff with a whole note.