

*This volume is dedicated to the memory of Dr. D. James Kennedy*

## Foreword

The majority of published festive hymn arrangements are written for organ and full brass; those for organ alone usually do not include a descant for the choir. I have endeavored to write festive settings for congregational singing, for organ and choir alone. It is my hope that you will find them useful in your church and that they will encourage both your congregation and choir to sing heartily to the glory of God.

—*Samuel Metzger*

## Performance Notes

### **Organ Registration**

These arrangements were written with the Ruffatti Organ of Coral Ridge Presbyterian Church in mind. The suggestions for registration may be modified to suit other organs. A Great or Swell trumpet, or other reed chorus, may be used in the absence of a solo trumpet. In some cases a solo trumpet may be too loud for large chords, in which case other reeds should be used. When playing trumpet fanfares, the performer should use a bright and articulated touch, much like the articulation of brass instruments.

Depending on the placement in the service, a shorter introduction and interlude may be required. Feel free to shorten to suit your needs. Most introductions end with the final phrase of the hymn – a logical place to start for a shorter introduction. The modulations may be replaced or shorted as well.

### **Optional Descants**

The descants are written SSA, but may be sung with fewer parts. The descant voices are being doubled in the organ. Sopranos who have difficulty singing a G or an A, are encouraged to move to lower notes. The smaller, cue-size notes may be sung by one or two voices or left out all together.

# Contents

| <b>Organ Settings</b>               | <b>Page</b> |
|-------------------------------------|-------------|
| <i>Antioch</i> . . . . .            | 4           |
| <i>Aurelia</i> . . . . .            | 8           |
| <i>Crusader's Hymn</i> . . . . .    | 13          |
| <i>CWM Rhondda</i> . . . . .        | 18          |
| <i>Diademata</i> . . . . .          | 22          |
| <i>Gloria</i> . . . . .             | 26          |
| <i>Hyfrydol</i> . . . . .           | 30          |
| <i>Lancashire</i> . . . . .         | 34          |
| <i>Lasst uns erfreuen</i> . . . . . | 39          |
| <i>Regent Square</i> . . . . .      | 42          |
| <i>Sagina</i> . . . . .             | 48          |
| <i>St. Christopher</i> . . . . .    | 52          |
| <i>Terra Beata</i> . . . . .        | 56          |
| <i>Veni Emmanuel</i> . . . . .      | 60          |
| <i>Webb</i> . . . . .               | 66          |

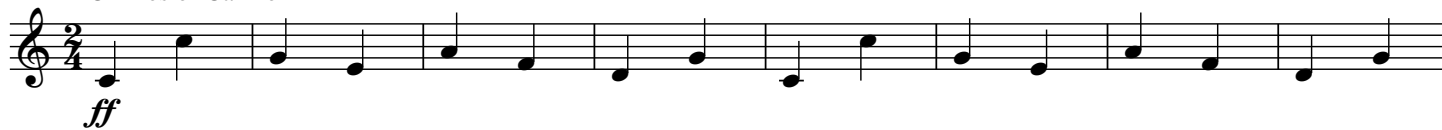
| <b>Descants</b>                     | <b>Page</b> |
|-------------------------------------|-------------|
| <i>Antioch</i> . . . . .            | 70          |
| <i>Aurelia</i> . . . . .            | 71          |
| <i>Crusader's Hymn</i> . . . . .    | 72          |
| <i>CWM Rhondda</i> . . . . .        | 73          |
| <i>Diademata</i> . . . . .          | 74          |
| <i>Gloria</i> . . . . .             | 75          |
| <i>Hyfrydol</i> . . . . .           | 76          |
| <i>Lancashire</i> . . . . .         | 77          |
| <i>Lasst uns erfreuen</i> . . . . . | 78          |
| <i>Regent Square</i> . . . . .      | 79          |
| <i>Sagina</i> . . . . .             | 80          |
| <i>St. Christopher</i> . . . . .    | 81          |
| <i>Terra Beata</i> . . . . .        | 82          |
| <i>Veni Emmanuel</i> . . . . .      | 83          |
| <i>Webb</i> . . . . .               | 84          |

# Antioch

Samuel Metzger

## Introduction

\*Chimes or Carillon



*ff*  
\*May be played an octave lower if appropriate

9

Gt.

*mf*

Ch.

*cresc.*

(optional chimes in left hand)

15

Gt.

*molto cresc.*

*ff*

Gt.

Descant part for choir is found on page 70.

Tune: *ANTIOCH*, George Frideric Handel, 1685-1759, and *adapt.* ca. 1742 (PD).  
Music: Newly composed, and copyright © 2010 with this publication.

Copyright © 2010 Birnamwood Publications (ASCAP)  
A division of MorningStar Music Publishers, Inc., St. Louis, MO.  
All rights reserved. Printed in U.S.A. [www.MorningStarMusic.com](http://www.MorningStarMusic.com)  
Reproducing this publication in any form is prohibited by law without the permission of the publisher.  
The CCLI License does not give permission to copy this music.

# Aurelia

Samuel Metzger

## Introduction



*Optional carillon or chimes, played in the appropriate octave. Otherwise begin in measure 4.*

4 Trumpet

8

[11] Gt. Trumpet

*\*Left hand begins here in the absence of carillon or chimes.*

Descant part for choir is found on page 71.

Tune: AURELIA, Samuel S. Wesley, 1810-1876, and written in 1864 (PD).  
 Music: Newly composed, and copyright © 2010 with this publication.

Copyright © 2010 Birnamwood Publications (ASCAP)  
 A division of MorningStar Music Publishers, Inc., St. Louis, MO.  
 All rights reserved. Printed in U.S.A. www.MorningStarMusic.com  
 Reproducing this publication in any form is prohibited by law without the permission of the publisher.  
 The CCLI License does not give permission to copy this music.

# Crusader's Hymn

Samuel Metzger

**\* Introduction**

Foundations & Strings 8', 4'

*rit.*

*p*

Light 32'

6

*a tempo*

10

Descant part for choir is found on page 72

\*If your hymnal has only three stanzas, play stanza 2 (measure 32) as an introduction, ending on beat 1 of measure 46. Then repeat Stanza 2 as the opening (or first) stanza and follow through to the end of this festive hymn setting.

Tune: *CRUSADER'S HYMN*, *Münster Gesangbuch*, 1677 (PD).

Music: Newly composed, and copyright © 2010 with this publication.

Copyright © 2010 Birnamwood Publications (ASCAP)

A division of MorningStar Music Publishers, Inc., St. Louis, MO.

All rights reserved. Printed in U.S.A. [www.MorningStarMusic.com](http://www.MorningStarMusic.com)

Reproducing this publication in any form is prohibited by law without the permission of the publisher.

The CCLI License does not give permission to copy this music.

# Cwm Rhondda

Samuel Metzger

## Introduction

Trumpet

5

Trumpet

Gt.

8

Gt.

Trumpet

Gt.

11

Trumpet

Descant part for choir is found on page 73.

Tune: *CWM RHONDDA*. John Hughes, 1873-1932, and written in 1907 (PD).  
 Music: Newly composed, and copyright © 2010 with this publication.

Copyright © 2010 Birnamwood Publications (ASCAP)  
 A division of MorningStar Music Publishers, Inc., St. Louis, MO.  
 All rights reserved. Printed in U.S.A. [www.MorningStarMusic.com](http://www.MorningStarMusic.com)  
 Reproducing this publication in any form is prohibited by law without the permission of the publisher.  
 The CCLI License does not give permission to copy this music.

# Diademata

Samuel Metzger

**Introduction**

Gt.

4

Trumpet

8

Trumpet

Gt.

Descant part for choir is found on page 74.

Tune: *DIADEMATA*, George J. Elvey, 1816-1893, and written in 1868 (PD).  
 Music: Newly composed, and copyright © 2010 with this publication.

Copyright © 2010 Birnamwood Publications (ASCAP)  
 A division of MorningStar Music Publishers, Inc., St. Louis, MO.  
 All rights reserved. Printed in U.S.A. [www.MorningStarMusic.com](http://www.MorningStarMusic.com)  
 Reproducing this publication in any form is prohibited by law without the permission of the publisher.  
 The CCLI License does not give permission to copy this music.

# Gloria

Samuel Metzger

## Introduction

Carillon, Chimes or Gt.

Descant part for choir is found on page 75.

Tune: *GLORIA*. Traditional French melody, arr. Edward S. Barnes, 1887-1958, and arr. in 1937 (PD).  
 Music: Newly composed, and copyright © 2010 with this publication.

Copyright © 2010 Birnamwood Publications (ASCAP)  
 A division of MorningStar Music Publishers, Inc., St. Louis, MO.  
 All rights reserved. Printed in U.S.A. www.MorningStarMusic.com  
 Reproducing this publication in any form is prohibited by law without the permission of the publisher.  
 The CCLI License does not give permission to copy this music.



# Hyfrydol

Samuel Metzger

## Introduction

*expansive and majestic*

Gt. Swell closed

Light 32'

Trumpet

## 17 Standard Verse

Gt.

Ped.

Descant part for choir is found on page 76.

Tune: *HYFRYDOL*, Rowland Hugh Pritchard, 1811-1887, and written in 1844 (PD).  
 Music: Newly composed, and copyright © 2010 with this publication.

Copyright © 2010 Birnamwood Publications (ASCAP)  
 A division of MorningStar Music Publishers, Inc., St. Louis, MO.  
 All rights reserved. Printed in U.S.A. [www.MorningStarMusic.com](http://www.MorningStarMusic.com)  
 Reproducing this publication in any form is prohibited by law without the permission of the publisher.  
 The CCLI License does not give permission to copy this music.

## Lancashire

Samuel Metzger

## Introduction

Gt: Trumpet

Ch: Full

Sw: Full *partially closed*

Gt.

Descant part for choir is found on page 77.

Tune: *LANCASHIRE*, Henry Smart, 1813-1879, and written in 1835 (PD).  
 Music: Newly composed, and copyright © 2010 with this publication.

Copyright © 2010 Birnamwood Publications (ASCAP)  
 A division of MorningStar Music Publishers, Inc., St. Louis, MO.  
 All rights reserved. Printed in U.S.A. [www.MorningStarMusic.com](http://www.MorningStarMusic.com)  
 Reproducing this publication in any form is prohibited by law without the permission of the publisher.  
 The CCLI License does not give permission to copy this music.

# Lasst uns erfreuen

Samuel Metzger

**Introduction**

*mp* *cresc. poco a poco sempre*

4

*ff*

[6] **Standard Verse**

Ped.

10

Descant part for choir is found on page 78.

Tune: *LASST UNS ERFREUEN*, *Geistliche Kirchengesäng*, Köln, 1623 (PD).  
 Music: Newly composed, and copyright © 2010 with this publication.

Copyright © 2010 Birnamwood Publications (ASCAP)  
 A division of MorningStar Music Publishers, Inc., St. Louis, MO.  
 All rights reserved. Printed in U.S.A. [www.MorningStarMusic.com](http://www.MorningStarMusic.com)  
 Reproducing this publication in any form is prohibited by law without the permission of the publisher.  
 The CCLI License does not give permission to copy this music.

# Regent Square

Samuel Metzger

## Introduction

Descant part for choir is found on page 79.

Tune: *REGENT SQUARE*, Henry T. Smart, 1813-1879, and written in 1867 (PD).  
 Music: Newly composed, and copyright © 2010 with this publication.

Copyright © 2010 Birnamwood Publications (ASCAP)  
 A division of MorningStar Music Publishers, Inc., St. Louis, MO.  
 All rights reserved. Printed in U.S.A. [www.MorningStarMusic.com](http://www.MorningStarMusic.com)  
 Reproducing this publication in any form is prohibited by law without the permission of the publisher.  
 The CCLI License does not give permission to copy this music.

## Sagina

Samuel Metzger

**Introduction**  
*con moto*

Full, no manual 16'

3

3

5

3

Trumpet

9

*tr.*

Descant part for choir is found on page 80.

Tune: *SAGINA*, Thomas Campbell, 1777-1844, and written in 1835 (PD).  
Music: Newly composed, and copyright © 2010 with this publication.

Copyright © 2010 Birnamwood Publications (ASCAP)  
A division of MorningStar Music Publishers, Inc., St. Louis, MO.  
All rights reserved. Printed in U.S.A. [www.MorningStarMusic.com](http://www.MorningStarMusic.com)  
Reproducing this publication in any form is prohibited by law without the permission of the publisher.  
The CCLI License does not give permission to copy this music.

# St. Christopher

Samuel Metzger

## Introduction

Gt: Foundations 8', 4', (2') and Reeds 8'

32' Flute

Descant part for choir is found on page 81.

Tune: *ST. CHRISTOPHER*, Frederick C. Maker, 1844-1927, and written in 1881 (PD).  
 Music: Newly composed, and copyright © 2010 with this publication.

Copyright © 2010 Birnamwood Publications (ASCAP)  
 A division of MorningStar Music Publishers, Inc., St. Louis, MO.  
 All rights reserved. Printed in U.S.A. [www.MorningStarMusic.com](http://www.MorningStarMusic.com)  
 Reproducing this publication in any form is prohibited by law without the permission of the publisher.  
 The CCLI License does not give permission to copy this music.

# Terra Beata

Samuel Metzger

## Introduction

*marcato*

Cornet V or Trumpet

Cromorne

holding back

[4] *a tempo*

Gt: Mixture Plenum

[8] **Standard Verse**

Gt.

Ped.

[12]

Descant part for choir is found on page 82.

Tune: *TERRA BEATA*, Traditional English melody, *adapt.* in 1915 by Franklin L. Sheppard, 1852-1930.  
 Music: Newly composed, and copyright © 2010 with this publication.

Copyright © 2010 Birnamwood Publications (ASCAP)  
 A division of MorningStar Music Publishers, Inc., St. Louis, MO.  
 All rights reserved. Printed in U.S.A. [www.MorningStarMusic.com](http://www.MorningStarMusic.com)  
 Reproducing this publication in any form is prohibited by law without the permission of the publisher.  
 The CCLI License does not give permission to copy this music.

# Veni Emmanuel

Samuel Metzger

## Introduction

Gt. *leggiero*

*f*

Trumpet  
*f*

Gt. 3

Descant part for choir is found on page 83.

Tune: *VENI EMMANUEL*, 15th century French processional (PD).

Music: Newly composed, and copyright © 2010 with this publication.

Copyright © 2010 Birnamwood Publications (ASCAP)

A division of MorningStar Music Publishers, Inc., St. Louis, MO.

All rights reserved. Printed in U.S.A. [www.MorningStarMusic.com](http://www.MorningStarMusic.com)

Reproducing this publication in any form is prohibited by law without the permission of the publisher.



## Webb

Samuel Metzger

## Introduction

Trumpet *marcato*

Gt.

3

Trumpet

(Gt.)

6

Descant part for choir is found on page 84.

Tune: *WEBB*, George J. Webb, 1803-1887, and written in 1830 (PD).  
 Music: Newly composed, and copyright © 2010 with this publication.

Copyright © 2010 Birnamwood Publications (ASCAP)  
 A division of MorningStar Music Publishers, Inc., St. Louis, MO.  
 All rights reserved. Printed in U.S.A. [www.MorningStarMusic.com](http://www.MorningStarMusic.com)  
 Reproducing this publication in any form is prohibited by law without the permission of the publisher.  
 The CCLI License does not give permission to copy this music.