

# The Day of Resurrection

## *Lead On, O King Eternal*

SATB, Congregation, Brass Quintet, Timpani, and Organ,  
with opt. Crash and Suspended Cymbals

John of Damascus, ca. 696-ca. 754  
Tr. John M. Neale, 1818-66, *alt.*  
Ernest W. Shurtleff, 1862-1917

Robert A. Hobby  
Based on *LANCASHIRE*  
by Henry T. Smart, 1813-79

### Introduction

♩ = ca. 100

Organ

15

15

(Brass) 3

3

17

I *f*

II *mf*

Ped.

21

II

rit.

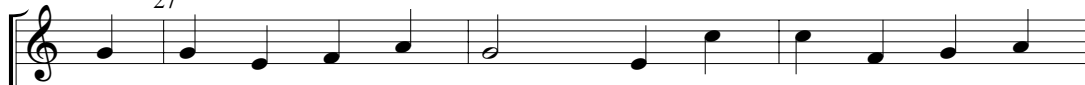
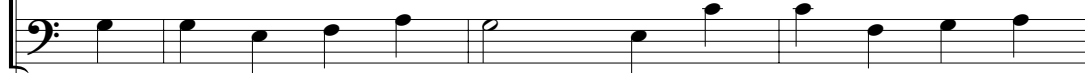
Reproducible Congregational parts included on pages 11-12.

Available editions: Full Score MSM-60-9026  
Instrumental Parts (Two Trumpets, Horn in F, Two Trombones, Timpani, and Cymbals)  
MSM-60-9026B

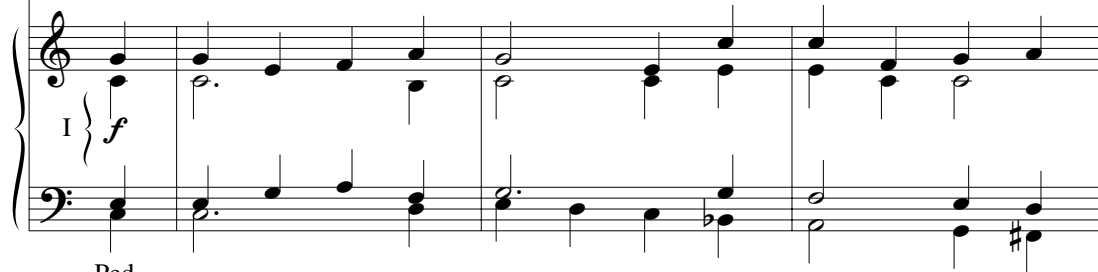
Organist may play from either Full Score or Choir Score.

Copyright © 2005 Birnamwood Publications (ASCAP)  
A division of MorningStar Music Publishers, Inc.  
1727 Larkin Williams Road, Fenton, MO 63026-2024  
All rights reserved. Printed in U.S.A.  
Reproducing this publication in any form is prohibited by law without the permission of the publisher.

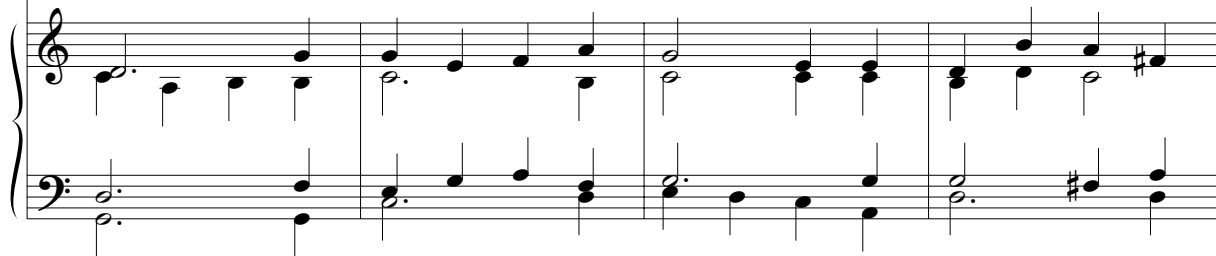
## Stanza 1

*f* Unison (+ Congr.)  
27Soprano  
AltoTenor  
Bass

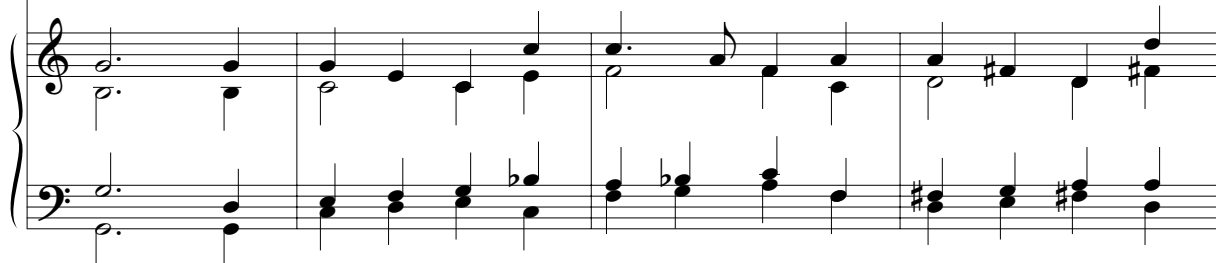
Organ



30

The pass - o - ver  
Hence - forth in fieldsof glad - ness, The pass - o - ver of  
of con - quest Your tents shall be our

34

Through days of  
home.From death to life e - ter - nal, From sin's do - min - ion  
of prep - a - ra - tion Your grace has made us

38

free, — Our Christ has brought us o - ver With hymns of vic - to - ry.  
 strong; — And now, O King e - ter - nal, We lift our bat - tle song.

### Stanza 2

(Choir)

*mf* 43

Soprano  
Alto

2. Let hearts be purged of e - vil That we may see a - right — The  
 2. Lead on, O King e - ter - nal, Till sin's fierce war shall cease, — And

Tenor  
Bass

*mf*

Organ

II } *mf*

Ped.