

# Contents

<i>Preface</i> . . . . .	3
<i>Metrical Index of Tunes</i> . . . . .	95
<b>Tune</b> (Piano, Guitar, Handbells) . . . . .	<b>Page</b>
Ar hyd y nos . . . . .	4-7
Azmon . . . . .	8-10
Beach Spring . . . . .	11-13
Break Bread Together . . . . .	14-17
Detroit . . . . .	18-20
Dove of Peace . . . . .	21-23
Duke Street . . . . .	24-27
Give Me Jesus . . . . .	28-31
Hankey . . . . .	32-35
Holy Manna . . . . .	36-39
Hyfrydol . . . . .	40-43
Kingsfold . . . . .	44-47
Land of Rest . . . . .	48-50
Lauda anima . . . . .	76-78
Leoni . . . . .	88-91
Let Us Break Bread . . . . .	14-17
Liebster Jesu, wir sind hier . . . . .	51-53
Lord, Revive Us . . . . .	54-57
Merton . . . . .	62-64
Nicaea . . . . .	58-61
O Waly Waly . . . . .	65-67
Picardy . . . . .	68-71
Praise, My Soul . . . . .	76-78
Slane . . . . .	72-75
St. Columba . . . . .	79-81
St. Denio . . . . .	92-94
St. Thomas ( <i>in E-flat</i> ) . . . . .	82-84
St. Thomas ( <i>in F</i> ) . . . . .	85-87
Yigdal . . . . .	88-91

## Preface

### Introduction

*Sing It Simply* is a collection of twenty-five familiar hymntunes arranged for piano with optional guitar, handbells, and bass. The settings are intended for unison singing, and many are in a lower key than is found in most standard hymnals. Some are complete reharmonizations while others are closely parallel standard harmonizations. The idea for this collection came from a presentation at a Hymn Society Conference on arranging hymntunes for folk-style piano and guitar.

### Descants

Optional descants are provided for each tune. Intended for handbells, most utilize bells found within a two-octave set, and some may be played as bell tree arrangements. They may also be played on a C instrument, or in a few cases, might be sung by a small group on a syllable designated by the director. Consider using the descants sparingly, perhaps only on the introduction and final stanza.

### Guitar, Bass, and Other Instruments

A separate guitar/bass part is provided with chords and melody. A bass player can play a bass line from the piano part or guitar lead sheet. Consider adding percussion instruments such as shakers, congas, or others. One might layer the parts, starting with piano and adding or subtracting the descant or other instruments on succeeding verses.

If the guitar player is able to do so, encourage him or her to improvise a free standing hymn stanza or a prelude or offertory based on the lead sheet. Include the bass player if possible.

I hope you will find these settings useful in your music ministry.

Thomas Keesecker

*Metrical Index of Tunes*

**SM**

**(Short Meter—66 86)**

St. Thomas

**CM**

**(Common Meter— 86 86)**

Azmon

Detroit

Land of Rest

**CMD**

**(Common Meter Double—86 86 86 86)**

Kingsfold

**LM**

**(Long Meter— 88 88)**

Duke Street

O Waly Waly

**66 84 D**

Leoni

Yigdal

**76 76 D with refrain**

Hankey

**78 78 88**

Liebster jesu, wir sind hier

**84 84 88 44**

Ar hyd y nos

**86 866**

Dove of Peace

**87 87**

Merton

St. Columba

**87 87 D**

Beach Spring

Holy Manna

Hyfrydol

Lord, Revive Us

**87 87 87**

Lauda Anima

Picardy

Praise, My Soul

**10 10 with refrain**

Break Bread Together

Let Us Break Bread

**10 10 10 10 or 10 11 11 12**

Slane

**11 11 11 11**

St. Denio

**11 12 12 10**

Nicaea

**Irregular**

Give Me Jesus

Nicaea

Copying is illegal  
Review only

# Ar hyd y nos

Piano with opt. Guitar, Handbells or C Instrument, and Bass

2 Octaves  
Handbells Used: 8



Thomas Keesecker

Handbells

Piano

4

Tune: *AR HYD Y NOS*, Traditional Welsh (PD).  
Music: Newly composed, and copyright © 2012 with this publication.

Copyright © 2012 Birnamwood Publications (ASCAP)  
A division of MorningStar Music Publishers, Inc., St. Louis, MO  
All rights reserved. Printed in U.S.A. 1.800.647.2117 www.MorningStarMusic.com  
Reproducing this publication in any form is prohibited by law without the permission of the publisher.  
The CCLI License does not give permission to copy this music.

Guitar/Bass

## Ar hyd y nos

Piano with opt. Guitar, Handbells or C Instrument, and Bass

Thomas Keesecker

Capo 3

Guitar/Bass:  $D$   $G$   $Em$   $A$   $G$   $A$   $D$   
 $F$   $B\flat$   $Gm$   $C$   $B\flat$   $C$   $F$

5

$D$   $G$   $Em$   $A$   $G$   $A$   $D$   
 $F$   $B\flat$   $Gm$   $C$   $B\flat$   $C$   $F$

Handbells/C Instrument

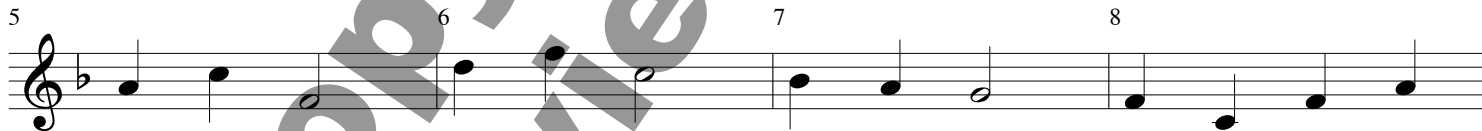
# Ar hyd y nos

Piano with opt. Guitar, Handbells or C Instrument, and Bass

2 Octaves  
Handbells Used: 8



Thomas Keesecker



# Hyfrydol

Piano with opt. Guitar, Handbells or C Instrument, and Bass

2 Octaves  
Handbells Used: 7



Thomas Keesacker

Handbells

Piano

Tune: HYFRYDOL, Rowland H. Prichard, 1811-1887, and written in 1831 (PD).  
Music: Newly composed, and copyright © 2012 with this publication.

Copyright © 2012 Birnamwood Publications (ASCAP)  
A division of MorningStar Music Publishers, Inc., St. Louis, MO  
All rights reserved. Printed in U.S.A. 1.800.647.2117 www.MorningStarMusic.com  
Reproducing this publication in any form is prohibited by law without the permission of the publisher.  
The CCLI License does not give permission to copy this music.

Guitar/Bass

## Hyfydol

Piano with opt. Guitar, Handbells or C Instrument, and Bass

Thomas Keesecker

Guitar/Bass:

D

D/F#

Em

A7

D/F#



6

GM7

A7

D

D

D/F#

Em



12

A7

D/F#

GM7

A7

D

F#m





Handbells/C Instrument

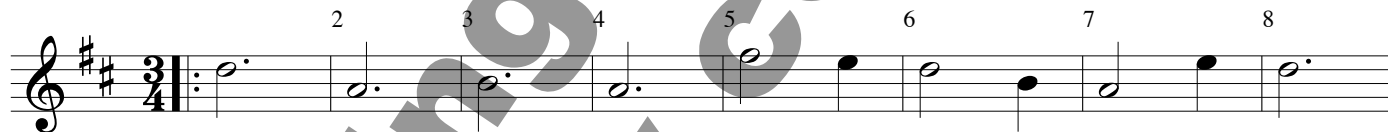
# Hyfrydol

Piano with opt. Guitar, Handbells or C Instrument, and Bass

2 Octaves  
Handbells Used: 7



Thomas Keesecker



# Nicaea

Piano with opt. Guitar, Handbells or C Instrument, and Bass

2 Octaves  
Handbells Used: 9



Thomas Keesecker

Handbells

Piano

Chords: C, Am7, G, C, /E, F, C

5

Chords: G, Am7, G/B, C, G/D, D7, G7

Tune: *NICAEA*, John B. Dykes, 1823-1876, and written in 1861 (PD).  
Music: Newly composed, and copyright © 2012 with this publication.

Copyright © 2012 Birnamwood Publications (ASCAP)  
A division of MorningStar Music Publishers, Inc., St. Louis, MO  
All rights reserved. Printed in U.S.A. 1.800.647.2117 www.MorningStarMusic.com  
Reproducing this publication in any form is prohibited by law without the permission of the publisher.  
The CCLI License does not give permission to copy this music.

Guitar/Bass

## Nicaea

Piano with opt. Guitar, Handbells or C Instrument, and Bass

Thomas Keesecker

Guitar/Bass: C

Am7

G

C

/E

F

C



5

G

Am7

G/B

C

G/D

D7

G7



Handbells/C Instrument

# Nicaea

Piano with opt. Guitar, Handbells or C Instrument, and Bass

2 Octaves  
Handbells Used: 9



Thomas Keesecker

