

Commissioned for the Mass celebrated by His Holiness Pope John Paul II  
in the Archdiocese of St. Louis, Missouri, January, 1999

## Festival Alleluia

Assembly, Cantor, and Organ with opt. SATB Choir,  
Brass Quartet/Quintet, Timpani, Suspended Cymbal, Flute, and Handbells

James Chepponis

Joyfully (♩ = 100)

Capo 3 (G) (Bm<sup>7</sup>) (Em) (Bm<sup>7</sup>) (C) (Am<sup>7</sup>) (D sus4) (D) (C/D) (D)  
B<sup>b</sup> Dm<sup>7</sup> Gm Dm<sup>7</sup> E<sup>b</sup> Cm<sup>7</sup> F sus<sup>4</sup> F E<sup>b</sup>/F F

Organ

*f* Play cue-size notes only in the absence of Brass

*f* *l. h.*

(Ped.) Ped.

6 (Cantor)

Al - le - lu - ia, al - le - lu - ia, al - le - lu - ia.

(G) (Bm<sup>7</sup>) (Em) (Bm<sup>7</sup>) (C) (Am<sup>7</sup>) (D sus4) (D) (C/D) (D)  
B<sup>b</sup> Dm<sup>7</sup> Gm Dm<sup>7</sup> E<sup>b</sup> Cm<sup>7</sup> F sus<sup>4</sup> F E<sup>b</sup>/F F

*mf*

10

Al - le - lu - ia, al - le - lu - ia, al - le - lu - ia!

(G) (Bm<sup>7</sup>) (Em) (Bm<sup>7</sup>) (C) (Am<sup>7</sup>) (G)  
B<sup>b</sup> Dm<sup>7</sup> Gm Dm<sup>7</sup> E<sup>b</sup> Cm<sup>7</sup> B<sup>b</sup>

The English translation of the Gospel verses from the *Lectionary for Mass* © 1969, 1981, 1997, International Committee on English in the Liturgy, Inc. All Rights Reserved.

Available editions: Full Score MSM-80-847

Choir Score MSM-80-847A

Instrumental Parts (Brass/Handbells) MSM-80-847B

Reproducible congregational part included on page 7.

Copyright © 1999 Birnamwood Publications (ASCAP)

A division of MorningStar Music Publishers, Inc., St. Louis, MO

All rights reserved. Printed in U.S.A. 1.800.647.2117 www.MorningStarMusic.com

Reproducing this publication in any form is prohibited by law without the permission of the publisher.

The CCLI License does not give permission to copy this music.

Refrain (+ Assembly)\*

14 *f*

Cantor  
Assembly

Al - le - lu - ia, al - le - lu - ia, al - le - lu - ia.

Soprano  
Alto

Al - le - lu - ia, al - le - lu - ia, al - le - lu - ia, al - le - lu - ia.

Tenor  
Bass

*f*

(G) (B m<sup>7</sup>) (E m) (B m<sup>7</sup>) (C) (A m<sup>7</sup>) (D sus4)(D) (C/D) (D)  
B<sub>b</sub> D m<sup>7</sup> G m D m<sup>7</sup> E<sub>b</sub> C m<sup>7</sup> F sus<sup>4</sup> F E<sub>b</sub>/F F

Organ

*f*

18 *ff* *Last time to CODA* ⊕

Al - le - lu - ia, al - le - lu - ia, al - le - lu - ia!

*ff* *Last time to CODA* ⊕

Al - le - lu - ia, al - le - lu - ia, al - le - lu - ia!

*ff* *Last time to CODA* ⊕

(G) (B m<sup>7</sup>) (E m) (B m<sup>7</sup>) (C) (A m<sup>7</sup>) (G)  
B<sub>b</sub> D m<sup>7</sup> G m D m<sup>7</sup> E<sub>b</sub> C m<sup>7</sup> B<sub>b</sub>

\*The choir should sing in unison with the assembly the first time the refrain is sung.

## Verse(s)

22

Cantor *mf*

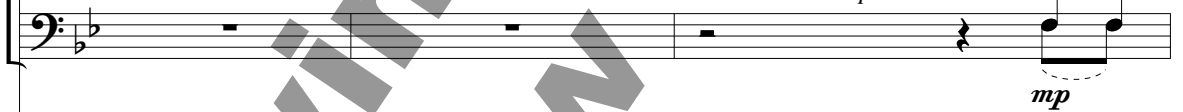
1. O Lord, o - pen our
2. If to - day you hear his
3. Your words, O Lord, give joy to my
4. Your word is a lamp for my
5. Your word, O Lord, is
6. I wait for the
7. ☩ Shine like lights in the

Choir optional

*mp*

1. O
2. If to -
3. Your
4. Your
5. Your
6. I
7. ☩

Choir optional

*mp*

(G) (D m<sup>7</sup>) (G) (D m<sup>7</sup>) (G) (D m<sup>7</sup>)

B<sup>b</sup> Fm<sup>7</sup> B<sup>b</sup> Fm<sup>7</sup> B<sup>b</sup> Fm<sup>7</sup>

*mf*

25

hearts  
voice,  
heart;  
feet  
truth;  
Lord;  
world

to  
O  
your  
and a  
make us  
my  
as you

lis - ten to the words of your  
hard - en - not your  
teach - ing is light to my  
light on my  
ho - ly in the  
soul waits for his  
hold on to the word of

Lord, o - pen our hearts to  
day you hear his voice, O  
words, O Lord, give joy to my heart; your  
word is a lamp for my feet and a  
word, O Lord, is truth; make us  
wait for the Lord; my  
Shine like lights in the world as you

(G) (Dm<sup>7</sup>) (E<sup>b</sup> maj<sup>7</sup>) (Cm<sup>7</sup>)  
B<sup>b</sup> Fm<sup>7</sup> G<sup>b</sup> maj<sup>7</sup> E<sup>b</sup> m<sup>7</sup>

27



Son,  
hearts,  
eyes,  
path,  
truth,  
word,  
life,

your  
your  
my  
the  
his  
of

Son.  
hearts.  
eyes.  
path.  
truth.  
word.  
life.



lis - ten to the words of your Son.  
hard - en - not your hearts.  
teach - ing is light to my eyes.  
light on my path.  
ho - ly in the truth.  
soul waits for his word.  
hold on to the word of life.

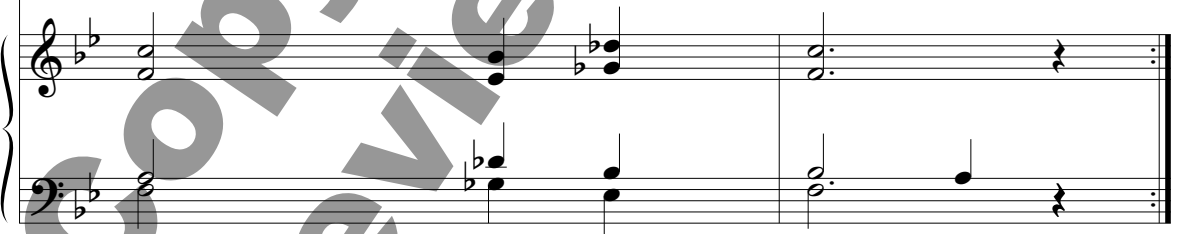


(D)  
F

(Cm<sup>7</sup>)  
Eb<sup>m7</sup>

(D sus4)  
F sus4

(D)  
F



♯ CODA

29

*allargando*

ia!

♯ CODA

*fff* *allargando*

ia! Al - le - lu - ia, al - le - lu - ia, al - le - lu - ia!

*fff* *allargando*

♯ CODA

(G) (E♭) (Cm) (G)  
B♭ G♭ E♭m B♭

*fff* *allargando*

Detailed description: This system contains the first three staves of the musical score. The top staff is a vocal line starting with a whole note 'ia!' followed by a rest. The second and third staves are piano accompaniment. The piano part begins with a fortissimo (*fff*) dynamic and an *allargando* tempo marking. The lyrics 'Al - le - lu - ia, al - le - lu - ia, al - le - lu - ia!' are written below the piano staves. The system concludes with a Coda symbol and a key signature change to B-flat major, indicated by the chord symbols (G) B♭, (E♭) G♭, (Cm) E♭m, and (G) B♭.

**Refrain**

*Commissioned for the Mass celebrated by His Holiness Pope John Paul II  
in the Archdiocese of St. Louis, Missouri, January, 1999*

**Festival Alleluia**

James Chepponis

Al - le - lu - ia, al - le - lu - ia, al - le - lu - ia.

Al - le - lu - ia, al - le - lu - ia, al - le - lu - ia!

Detailed description: The Refrain section is enclosed in a rectangular box. It features two lines of musical notation in 4/4 time, with a key signature of one flat. The first line of melody is accompanied by the lyrics 'Al - le - lu - ia, al - le - lu - ia, al - le - lu - ia.' The second line of melody is accompanied by the lyrics 'Al - le - lu - ia, al - le - lu - ia, al - le - lu - ia!'.

Copyright © 1999 Birnamwood Publications (ASCAP)  
A division of MorningStar Music Publishers, Inc., St. Louis, MO  
All rights reserved. Printed in U.S.A. 1.800.647.2117 [www.MorningStarMusic.com](http://www.MorningStarMusic.com)

The Refrain may be reproduced for congregational use provided the above copyright notice is included.