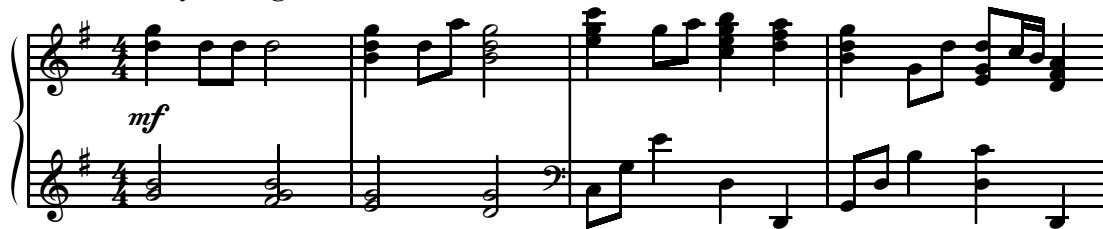


# Hear the Children Sing "Hosanna!"

SATB and Children's or Unison Choir

Words and Music by  
Ruth Elaine Schram

Stately, with grandeur ♩ = ca. 100



1st time: Child./Unis. Choir

5 \* *mf*

"Bless - ed is He! Bless - ed is He!" Hear the chil - dren sing

SA 2nd time: +S *mf*  
3rd time: +A

"Bless - ed is He!" Hear them sing - ing "Ho - san -

This system contains the first vocal entry and piano accompaniment. The vocal staves (Soprano and Alto) enter with the lyrics "Bless - ed is He! Bless - ed is He!" and "Hear the chil - dren sing". The piano accompaniment supports the vocal lines with chords and moving lines. The system ends with a repeat sign.

9 1. Repeat as needed

"Bless - ed is He! Bless - ed is He! Ho - san - na to the King!"

na! Bless - ed is He! Ho - san - na to the King!"

1. Repeat as needed

This system continues the vocal and piano parts. The vocal staves sing "na! Bless - ed is He! Ho - san - na to the King!". The piano accompaniment continues with chords and moving lines. The system ends with a repeat sign.

Duration: 3:00

\* The repeats are intended to allow flexibility for Palm Sunday processions, if desired. Directors should freely interpret the guidelines for layering voices, adapting as needed to accommodate processional needs.

© 2007 The Lorenz Publishing Company, a division of The Lorenz Corporation. All rights reserved. Printed in U.S.A.

Reproduction of this publication without permission of the publisher is a criminal offense subject to prosecution.

THE CCLI LICENSE DOES NOT GRANT PERMISSION TO PHOTOCOPY THIS MUSIC.

13 2 Child./Unis. Choir

King!" "Bless - ed is He! Bless - ed is He!"

1st time: SAT  
SA 2nd time: SATB

King!" TB *mf* "Bless - ed is He! Hear them

"Bless - ed is He! Bless - ed is He!"

16

Hear the chil - dren sing "Bless - ed is He!

sing - ing "Ho - san - na!" "Bless - ed is

Hear the chil - dren sing "Ho - san - na!"

1. Repeat as needed to m. 14

19

Bless - ed is He! Ho - san - na to the King!"

He! ————— Ho - san - na to the King!"

1. Repeat as needed to m. 14

22

2

King!"

King!" Let not those roy - al feet touch the

*mp*

2

*mp*

25

soil of the earth; lay your coats on the

*cresc.*

*cresc.*

This musical system covers measures 25 to 27. It features a vocal line with lyrics and a piano accompaniment. The key signature has one sharp (F#). The vocal line begins with a whole rest in measure 25, followed by eighth notes in measure 26, and a half note in measure 27. The piano accompaniment consists of chords in measure 25, moving to eighth-note patterns in measures 26 and 27. Both parts include a *cresc.* (crescendo) marking in measure 27.

28

“Bless - ed is He! Bless - ed is He!”

ground be-fore the King.

*mf*

*mf*

*mf*

This musical system covers measures 28 to 30. The vocal line has lyrics and a melodic line. The piano accompaniment provides harmonic support. The key signature has one sharp (F#). The system includes *mf* (mezzo-forte) markings for the vocal line in measures 28 and 29, and for the piano accompaniment in measure 29. The vocal line ends with a long horizontal line under the word 'King' in measure 30.