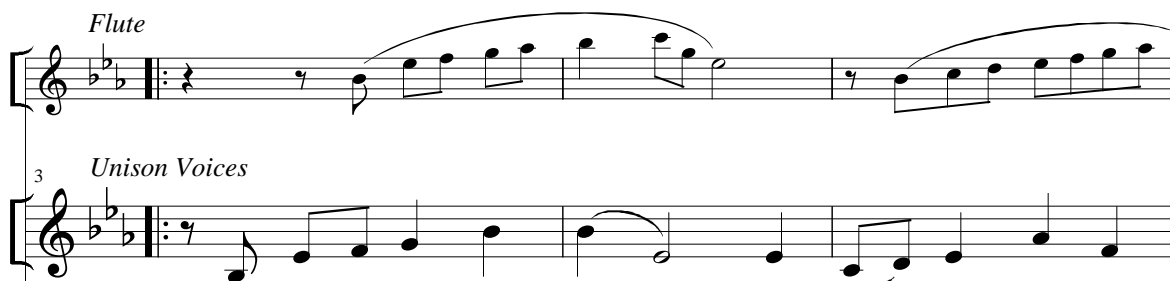
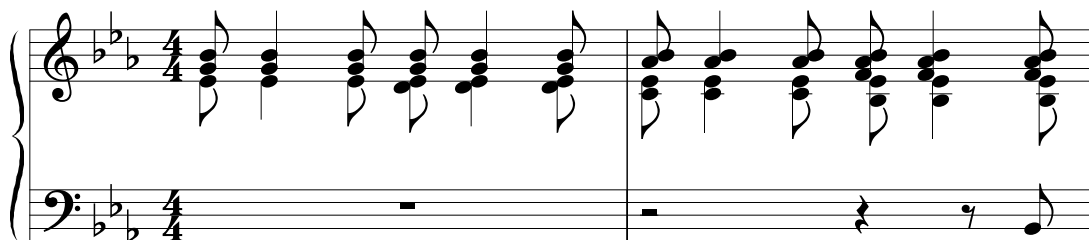


# THE LOVE OF GOD COMES CLOSE

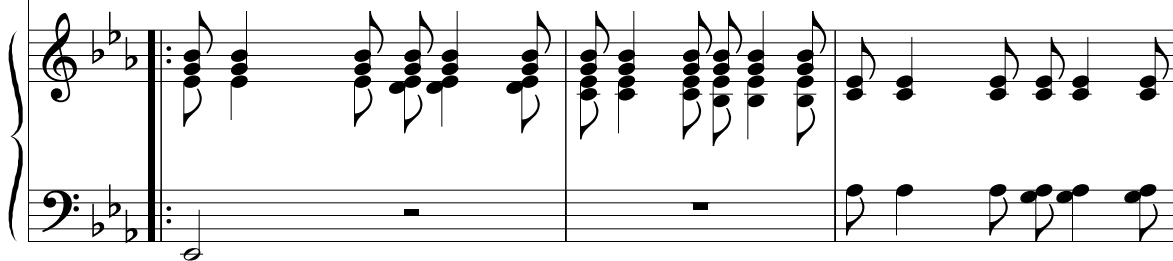
JLB

Tune: MELANIE  
John L. Bell

Gently ♩ = 100-108



1. The love of God comes close— where stands an o - pen
2. The peace of God comes close— to those caught in the
3. The joy of God comes close— where faith - en - coun - ters
4. The grace of God comes close— to those whose grace is
5. The Son of God comes close— where peo - ple praise his



*Recorded in the collection "Love and Anger," CD/Cassette-428.*

Copyright © 1998, 1997 Wild Goose Resource Group, The Iona Community.

Pierce Institute, 840 Govan Road, Glasgow G51 3UU, Scotland

GIA Publications, Inc., exclusive North American agent, 7404 S. Mason Ave., Chicago, IL 60638

International Copyright Secured All Rights Reserved Printed in U.S.A.

Photocopying of this publication without permission of the publisher is a violation of the U.S. Code of Law for which the responsible individual or institution is subject to criminal prosecution. No one is exempt.

6

door storm, fears, spent, name, to let the stran - ger of for - go - ing lives where heights and depths when hearts are tired or where bread and wine are

8

in, ——— to min - gle rich and poor: ease ——— to ease — the lives for - lorn: life ——— are found through smiles and tears: sore ——— and hope — is bruised or bent: blest ——— and shared, as when he came: