

I WILL SING FOREVER

Psalm 89, adapt. MH

Music by
Marty Haugen

♩ = ca. 78

Introduction

Guitar tacet

Musical notation for the Introduction section, featuring a piano accompaniment in 2/4 time with a key signature of two sharps (D major). The notation consists of two staves: a treble clef staff and a bass clef staff. The treble staff contains a series of chords and single notes, while the bass staff provides a simple harmonic accompaniment.

Continuation of the piano accompaniment for the Introduction section, showing the final measures of the piece.

Refrain

Descant

Musical notation for the Refrain section, featuring a descant melody and lyrics. The notation consists of a single treble clef staff with a key signature of two sharps (D major). The lyrics are: "I will sing for - ev - er, sing for - ev - er of your".

Melody

Musical notation for the Refrain section, featuring a melody and lyrics. The notation consists of a single treble clef staff with a key signature of two sharps (D major). The lyrics are: "I will sing for - ev - er of your love, O God, pro-".

Musical notation for the Refrain section, featuring a piano accompaniment with chord symbols. The notation consists of two staves: a treble clef staff and a bass clef staff. The key signature is two sharps (D major). The chord symbols are: A⁷, D, Em⁷, F[♯]m⁷, and Bm.

Copyright © 2001 by GIA Publications, Inc., 7404 S. Mason Ave., Chicago, IL 60638

International Copyright Secured All Rights Reserved Printed in U.S.A.

Photocopying of this publication without permission of the publisher is a violation of the U.S. Code of Law for which the responsible individual or institution is subject to criminal prosecution. No one is exempt.

love and your stead - fast faith - ful -
claim your faith-ful-ness, stead - fast faith - ful - ness, to

G A⁷/G F[#]m⁷ Bm⁷

This system contains the first four measures of the piece. It features two vocal staves and a piano accompaniment with two staves. The key signature is two sharps (F# and C#). The piano accompaniment includes chord markings: G, A⁷/G, F[#]m⁷, and Bm⁷.

Last time to Coda ☉

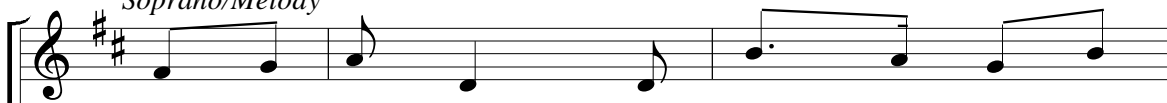
ness to ev - 'ry gen - er - a - tion. _____
ev - 'ry gen - er - a - tion. _____

Last time to Coda ☉

Em⁷ D/F# G A⁷ G/D D

This system contains the next four measures. It features two vocal staves and a piano accompaniment with two staves. The piano accompaniment includes chord markings: Em⁷, D/F#, G, A⁷, G/D, and D. The system concludes with a Coda symbol (☉).

Verses*

Soprano/Melody

1. You have prom - ised, "My kind - ness is for -
 2. Let the heav - ens sing out in praise to
 3. Oh how hap - py the ones who sing your
 4. You, their Sav - ior, the strength in which they

Alto

1. You have prom - ised, "Kind - ness is for -
 2. Let the heav - ens sing in praise to
 3. Oh how hap - py those who sing your
 4. You, their Sav - ior, strength — and their

T,B

A⁷ D Em⁷

*See Page 7 for an a cappella setting of Verse 3.