

For the wedding of Soo-Jin Kim and Robert Ridgell, May 28, 2005,
at the Cathedral of the Madeleine, Salt Lake City.

LAUDATE DOMINUM DE CAELIS

Praise the Lord from the Heavens

Words Adapt. and Music by
Richard Proulx

Psalm 148

$\text{♩} = 46$

Cantor *mf*

Lau - da - te Do - mi-num de

Organ II *mf*

5

cae - lis, lau - da - te e - um in ex - cel - sis.

9

Praise the Lord from the heav - ens, praise him in the heights.

Copyright © 2008 by GIA Publications, Inc. • All Rights Reserved • Printed in U.S.A.
7404 S. Mason Ave., Chicago, IL 60638 • www.giamusic.com • 800.442.1358

G-7283

Reproduction of this publication without permission of the publisher is a violation of the U.S. Code of Law
for which the responsible individual or institution is subject to criminal prosecution. No one is exempt.

4 **Refrain**

13

S, A, Assembly **f**

Lau - da - te Do - mi - num de

T, B **f**

Detailed description: This block contains the vocal staves for Soprano and Alto. The Soprano part is on a treble clef staff, and the Alto part is on a bass clef staff. Both parts start with a whole rest for two measures, then enter with a half note 'L' and a quarter note 'a' on the first measure, followed by a half note 'u' and a quarter note 'd' on the second measure, and so on. The lyrics are 'Lau - da - te Do - mi - num de'. The Alto part has a 'T, B' marking above it, indicating Tenor and Bass parts.

f

Ped.

Detailed description: This block shows the piano accompaniment for measures 13-16. It consists of a grand staff with treble and bass clefs. The music features a steady eighth-note accompaniment in the bass and a more melodic line in the treble. A forte (**f**) dynamic is indicated. A 'Ped.' (pedal) marking is present at the bottom of the bass staff.

17

, div.

cae - lis, lau - da - te e - um in ex - cel - sis. —

, div.

Detailed description: This block contains the vocal staves for Soprano and Alto for measures 17-20. The Soprano part is on a treble clef staff, and the Alto part is on a bass clef staff. The lyrics are 'cae - lis, lau - da - te e - um in ex - cel - sis. —'. The music is marked with a 'div.' (divisi) instruction, indicating that the vocalists should sing in parts.

Detailed description: This block shows the piano accompaniment for measures 17-20. It consists of a grand staff with treble and bass clefs. The music features a steady eighth-note accompaniment in the bass and a more melodic line in the treble. The dynamics are consistent with the previous section.

21

last time rall.

To Verses

Praise the Lord from the heav - ens, — praise him in the heights.

last time rall.

Detailed description: This block contains the vocal staves for Soprano and Alto for measures 21-24. The Soprano part is on a treble clef staff, and the Alto part is on a bass clef staff. The lyrics are 'Praise the Lord from the heav - ens, — praise him in the heights.'. The music is marked with a 'last time rall.' (last time rritardando) instruction, indicating a deceleration. The section ends with a double bar line and the instruction 'To Verses'.

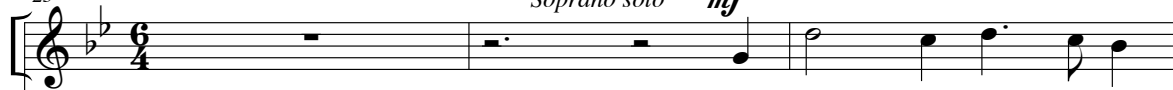
last time rall.

To Verses

Detailed description: This block shows the piano accompaniment for measures 21-24. It consists of a grand staff with treble and bass clefs. The music features a steady eighth-note accompaniment in the bass and a more melodic line in the treble. The dynamics are consistent with the previous section. The section ends with a double bar line and the instruction 'To Verses'.

Slightly faster $\text{♩} = 104$

Verse 1

Soprano solo *mf*

1. O praise the Lord from the

II
Flutes *mf*



heav - ens, O praise him in the heights.



Praise him all you an - gels, - praise him,



D.S.

praise him in the heights.

D.S.