

for Daniel Hollins

## DIDN'T MY LORD DELIVER DANIEL?

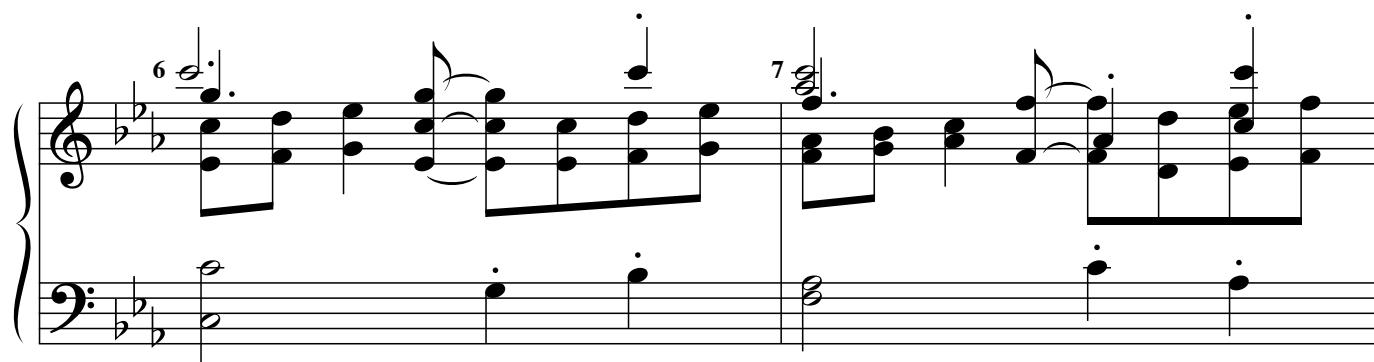
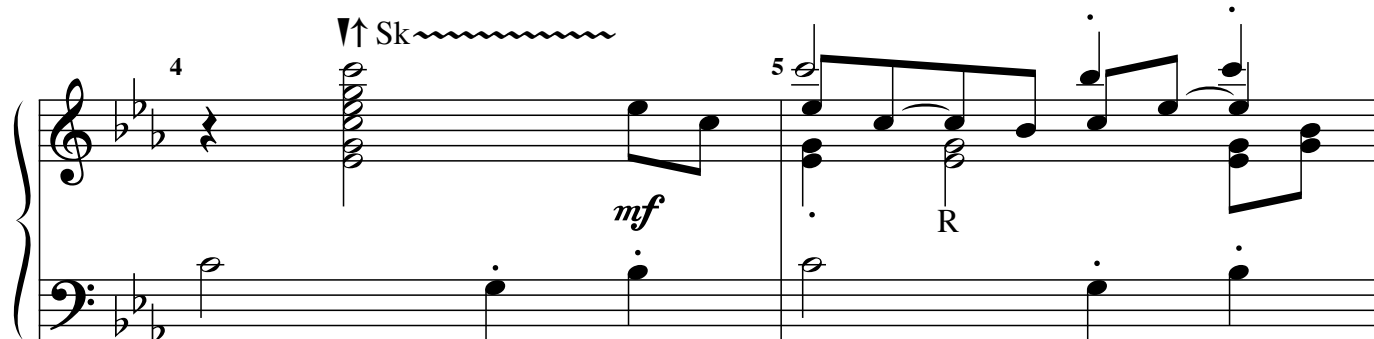
Traditional spiritual  
Arr. Linda R. Lamb

2 or 3 octaves handbells



2 octave choirs omit notes in ( ).

Lively ♩ = 116–120



This piece is most effective when ringers know which notes are melody notes. Following the stem direction is essential in determining which techniques are required for which notes.

\*All staccato notes may be played by using a combination of TD, Pl, light martellato, or malletting on a padded table.

Copyright © 2009 by GIA Publications, Inc. • All Rights Reserved • Printed in U.S.A.  
7404 S. Mason Ave., Chicago, IL 60638 • www.giamusic.com • 800.442.1358

G-7464

Reproduction of this publication without permission of the publisher is a violation of the U.S. Code of Law for which the responsible individual or institution is subject to criminal prosecution. No one is exempt.

Measures 8 and 9 of a musical score in G-flat major (three flats). Measure 8 features a treble staff with a dotted half note G4 and a bass staff with a dotted half note G2. Measure 9 features a treble staff with a dotted half note G4 and a bass staff with a dotted half note G2. A fermata is placed over the G4 in measure 9, and a 'R' (ritardando) marking is present below the treble staff.

Measures 10 and 11 of a musical score in G-flat major. Measure 10 features a treble staff with a dotted half note G4 and a bass staff with a dotted half note G2. Measure 11 features a treble staff with a dotted half note G4 and a bass staff with a dotted half note G2. A fermata is placed over the G4 in measure 11, and a 'R' (ritardando) marking is present below the treble staff.

Measures 12 and 13 of a musical score in G-flat major. Measure 12 features a treble staff with a dotted half note G4 and a bass staff with a dotted half note G2. Measure 13 features a treble staff with a dotted half note G4 and a bass staff with a dotted half note G2. A fermata is placed over the G4 in measure 13, and a 'mf' (mezzo-forte) marking is present below the treble staff. A wavy line with an upward arrow and the text 'Sk' (Sforzando) is placed above the treble staff.

Measures 14 and 15 of a musical score in G-flat major. Measure 14 features a treble staff with a dotted half note G4 and a bass staff with a dotted half note G2. Measure 15 features a treble staff with a dotted half note G4 and a bass staff with a dotted half note G2. A fermata is placed over the G4 in measure 15.