

# WITH ONE VOICE

John L. Bell and Graham Maule

David Haas  
Piano Accompaniment by Paul A. Tate

With passionate energy! ♩. = 44

Capo 2: (Em)  
F#m

(ESUS2,4)  
F#SUS2,4

(Em)  
F#m

(ESUS2,4)  
F#SUS2,4

(Em)  
F#m

## Verses

*mf*

1. Sis - ters and	broth - ers,	with	one	voice
2. Stran - gers no	more, but	cher - ished	friends,	
3. Not, though, by	wis - dom,	wealth -	or	skill,
4. Christ is the	way. By	him -	a -	lone,
5. Then fol - low	him through	ev -	'ry	day.
6. In fac - t'ry,	of - fice,	home -	or	hall,
7. Seek - ing and	serv - ing,	with	one	voice,

(Em)  
F#m

(D/F#)  
E/G#

(Em)  
F#m

A part for 2 C Instruments can be found on page 7.

Words Copyright © 2002 by WGRG, Iona Community, Scotland.  
GIA Publications, Inc., exclusive North American agent.

Music Copyright © 2011 by GIA Publications, Inc. • All Rights Reserved • Printed in U.S.A.  
7404 S. Mason Ave., Chicago, IL 60638 • www.giamusic.com • 800.442.1358

Reproduction of this publication without permission of the publisher is a violation of the U.S. Code of Law for which the responsible individual or institution is subject to criminal prosecution. No one is exempt.

13

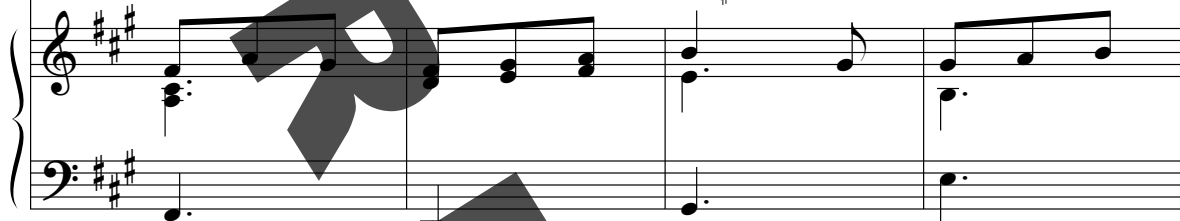


con - firm your call - ing and re -  
 live as the bod - y God in -  
 nor by our - selves can we ful -  
 seeds of the king - dom's life are  
 Fear not what crowds or crit - ics  
 where peo - ple strug - gle, strive or  
 con - firm your call - ing and re -

(C)  
D

(D/F#)  
E/G#

(D)  
E



17



joice: \_\_\_\_\_ each is God's child and  
 tends, \_\_\_\_\_ shar - ing the love the  
 fill \_\_\_\_\_ what, for the world, is  
 sown, \_\_\_\_\_ pat - terns of heav - en and  
 say: \_\_\_\_\_ those on the move stir  
 stall, \_\_\_\_\_ seek out and serve the  
 joice: \_\_\_\_\_ each is God's child and

(G)  
A

(Am)  
Bm

(Em)  
F#m

